

## Detecting Soft Failures in Pediatric Cochlear Implants: Relating Behavior to Language Outcomes

Aaron C. Moberly, D. Bradley Welling, and Susan Nittrouer

*The Ohio State University Wexner Medical Center, Columbus, Ohio, U.S.A.*

**Hypothesis:** Undesirable behaviors in young children with cochlear implants suggest device soft failure.

**Background:** Cochlear implant soft failure refers to nonoptimal performance not detectable with routine hardware checks. Pediatric failures may delay language development, but failure detection is difficult. A 2005 soft failure consensus statement recommended a checklist for suspected device malfunctions. That checklist included the appearance of “bad” behaviors and aggression (externalizing behaviors) or self-injury and inattentiveness (internalizing behaviors) as indicators of soft failure. Accordingly, these behaviors should predict slowed language growth, and the analyses reported here sought evidence of that predictive power.

**Methods:** Data from a longitudinal study of 80 children with cochlear implants collected at 6 times between 18 and 48 months were reexamined. Language measures included auditory comprehension, expressive vocabulary, and unstructured language. A parent questionnaire, the Child Behavior Checklist, examined

externalizing and internalizing behaviors. Behavior measures were correlated with language measures in a series of analyses.

**Results:** Externalizing and internalizing behaviors did not consistently correlate with language at the ages tested. Additionally, early behaviors did not predict later language abilities. Individual language measures correlated best with overall language development 12 months later.

**Conclusion:** This study fails to support the hypothesis that externalizing and internalizing behaviors in pediatric cochlear implant users correlate with slowed language advance. These behaviors should not be seen as evidence of declining language performance as may be seen with device soft failure. Instead clinical assessments of language abilities are necessary.

**Key Words:** Child behavior—Cochlear implants—Prosthesis failure.

*Otol Neurotol* 34:1648–1655, 2013.

Cochlear implant (CI) “soft” failure is a working diagnosis that is supported by clinical, audiologic, and radiographic criteria (1,2). Typically, patients present with a deterioration in their previous implant performance, a failure to progress in language development, or new symptoms such as facial nerve stimulation or pain with use of the implant. Four criteria identified in a 2005 consensus statement on identification of CI soft failures included the following: 1) the exclusion of detectable hardware- or software-related causes, 2) exclusion of medical problems that could lead to device failure, 3) radiographic evidence of proper device and electrode array placement, and 4) improved function or symptom alleviation with device reimplantation (2).

Diagnosis of pediatric soft failure may be significantly more challenging than that for adults, and even defining the term *soft failure* in children is difficult. It has been stated, “[Soft] device malfunction is suspected but cannot be proven. It is a working diagnosis, based on characteristics such as shocking sensations, popping sounds, intermittency, or unexplained progressive decrement in performance” (2). Marlowe et al. (3) described 18 cases of pediatric device reimplantations for device soft failure (there termed *suspected failures*), which was defined as “diminished or stagnant speech perception.” Many young children are not able to verbalize their experience of new symptoms or a deterioration in speech perception. Moreover, the rate of language development is variable among pediatric CI users, so it may not be apparent if a child is straying from his or her previous trajectory of language development. Device failures may be missed in children unless an observant caregiver or teacher detects a decline in language abilities or poorer-than-expected progress. Sensitive clinical tools are not readily available to identify these children, so the identification of device soft failure continues to equate with poor language development or a decline in language performance.

Address correspondence and reprint requests to Aaron C. Moberly, M.D., Otolaryngology–Head & Neck Surgery, The Ohio State University, 915 Olentangy River Road, Suite 4000, Columbus, OH 43212; E-mail: Aaron.Moberly@osumc.edu

This work was supported by Grant No. R01 DC006237 (to S. N.) from the National Institute on Deafness and Other Communication Disorders, the National Institutes of Health.

The authors disclose no conflicts of interest.

Several authors have reported their institutions' incidence of soft failure (sometimes referred to as suspected device failure) in pediatric CI users. Marlowe et al. (4) reported a revision pediatric cochlear implantation rate of 12.9% in 482 CI surgeries, 29% of which were performed for suspected device failure. In another large series of pediatric implants, Brown et al. (5) reported a 7.3% implant revision rate with 23% performed for soft failure. Cullen et al. (6) reported a 11.2% revision rate in 952 pediatric CI users, with a 15% soft failure rate. In each series, soft failure was diagnosed by identification of aversive symptoms, a decrement in language performance, or a failure to progress appropriately in language development. Considering the difficulty posed by trying to identify language decrement or failure to progress in pediatric patients, it is conceivable that actual soft failure rates may be even higher than those reported.

A suggested Soft Failure Assessment Checklist was developed by the 2005 consensus panel consisting of leaders in the implant field to assist clinicians in recognizing device soft failures (Appendix A) (2). Included in this checklist were a number of behavioral factors that were thought to be useful in identifying at-risk individuals: an increase in "bad" behaviors or aggressiveness ("externalizing" behaviors), unwillingness to wear the device, head hitting, or inattentiveness ("internalizing" behaviors). It is reasonable to believe that these behaviors could serve as "red flags" for device malfunction. Unfortunately, there is little data to date to support the relationships between these behaviors and language development or device failure.

The purpose of this study was to evaluate whether the presence of externalizing or internalizing behaviors such as those listed above can be used as a warning sign of poor language development and should rouse suspicion of a device soft failure. Identification of these behaviors in a child with a CI would be a much simpler task for caregivers, teachers, and clinicians than identifying a general language decline or failure to progress in language development. The reported evaluation was accomplished by reanalysis of a subset of previously published data (7) to gauge the strength of relationship between suspect behaviors and language skill.

## MATERIALS AND METHODS

### Participants

Participants were 80 children with cochlear implants who were part of an ongoing longitudinal study (7), and a full report of demographic factors can be found there. Table 1 presents group means (and SDs) for selected demographic measures. All children in the study had profound sensorineural hearing loss. All were identified before 2 years of age and most before 1 year. Children received their CIs early, which for most meant at or before 2 years of age. Consequently, these children had considerable experience with their CIs. Forty-two of the children wore CIs bilaterally by the age of 48 months. Sixty-one percent of the children wore devices by Cochlear Corporation, 35% wore devices by Advanced Bionics, and 4% wore devices by

TABLE 1. Mean values for demographic measures

	n	Mean (SD)
Age of identification (mo)	80	6.13 (7.13)
Age of first amplification (mo)	80	7.80 (6.96)
Age of first implant (mo)	80	17.09 (6.85)
Age of second implant (mo)	42	35.14 (10.75)
Better-ear pure tone average	80	103.76 (13.83)

Med-El. To be in the study, children were required to have been full-term newborns and have no medical problems other than hearing loss that could be expected to delay language acquisition. English was the only language spoken in the home, and parents were required to have normal hearing. Socioeconomic status was indexed using a 2-factor scale on which both the highest educational level and the occupational status of the primary income earner in the home is considered (8). These scores suggest that all children came from middle-class families, so had reasonably rich language environments in the home. All children had received intervention starting shortly after their hearing loss was identified at least once per week until the age of 36 months and then attended preschool programs designed for children with hearing loss for at least 16 hours per week after age 36 months. These programs emphasized spoken language. Data collected from these children between 18 and 48 months are reported.

### Equipment

Each test session was video and audio recorded using a Sony DCR-TRV19 video recorder. Sessions were recorded, so scoring could be done at a later time. Children wore Sony FM transmitters in specially designed vests that transmitted speech signals to the receivers, which provided direct line input to the hard drives of the cameras. This procedure ensured good sound quality for all recordings. All children were tested wearing their customary auditory prostheses (unilateral CI, bilateral CI, or unilateral CI with contralateral hearing aid), which were checked at the start of testing.

### General Procedures

Testing took place at multiple sites across the United States as described by Nittrouer (7), with all examiners having undergone two 2-day training sessions prior to testing. Measures collected during those sessions and used in this report are described here. They include children's auditory comprehension, expressive vocabulary, and unstructured language.

### Task-Specific Procedures

Multiple measures of language, including auditory comprehension, vocabulary, and children's use of unstructured language, were collected and were correlated with measures of internalizing and externalizing behaviors. Task-specific procedures will be described in brief in this report. See Nittrouer (7) for a more complete description of each task.

### Auditory Comprehension

The Auditory Comprehension subscale of the Preschool Language Scales-4 (PLS-4) was used to measure this ability (9). This test is a standardized assessment tool generally used for children between birth and 7 years of age. Most items require the child to demonstrate spoken language comprehension by performing specific commands provided by the examiner. Items

on this test are organized hierarchically, as older children would be expected to understand more complex linguistic structure than younger children. The Auditory Comprehension subscale has excellent reliability to evaluate specific components of comprehension, including lexical, syntactic, and grammatical elements. Standard scores were used in analyses.

#### *Expressive Vocabulary*

Two measures of expressive vocabulary were used for this study. For children between the ages of 18 and 30 months, the Language Development Survey (LDS) was used (10). The LDS has been shown to correlate well with direct measures of expressive vocabulary. This test consists of 310 words, and parents filled out a survey by circling the words that their children say spontaneously and with consistent pronunciation. Number of words spoken was used in analysis.

For children between 36 and 48 months of age, the Expressive One-Word Picture Vocabulary Test (EOWPVT) was administered (11). For this test, the child is shown a picture and is asked to name the picture with the appropriate vocabulary word. Standard scores were used in analyses.

#### *Unstructured Language*

At every test age, a 20-minute language sample was obtained and scored to provide a comprehensive measure of children's productive language abilities. Four measures that were made to index the form and function of children's early communication are reported here. First, the number of real-word utterances was calculated as the number of utterances consisting of real words in the entire 20-minute language sample. Second, the number of answers children produced in 20 minutes was obtained as a metric of how responsive children were in a meaningful way. Third, the total number of vocalizations produced during this 20-minute sample was calculated. Finally, the total number of imitations was calculated during the same sample.

Two measures of productive syntax obtained from the 20-minute language sample are also reported. Systematic Analysis of Language Transcripts, Version 9 (SALT) was used to obtain these metrics (12). First, mean length of utterance (MLU) was used, defined as the mean number of morphemes per utterance. The number of pronouns used correctly in those 50 utterances is the other measure reported.

#### *Latent Language Measure*

To more comprehensively evaluate language development, a composite measure of language was developed (7). This composite measure, referred to as a latent language measure, allowed the characterization of developmental trajectories of individual children. Details on calculating a composite language score using latent growth modeling are found in Nittrouer (7). In brief, an estimate of the effects of multiple predictor variables on a dependent language measure can be made. Eight measures were used in the construction of the latent language measure: auditory comprehension, expressive vocabulary, real-word utterances, answers, imitations, number of vocalizations, mean length of utterance, and the Leiter International Performance Scale-Revised (LIPS-R) classification score, which is a measure of cognitive development (13).

#### *Internalizing and Externalizing Behaviors*

To evaluate internalizing and externalizing behaviors, the Child Behavior Checklist (CBCL) (14) was used. The CBCL is appropriate for children between 18 months and 5 years of age and examines 100 separate behaviors. It is a questionnaire that

is completed by parents, who respond to each item by circling a number from 0 to 2, indicating whether ascribing the behavior to their child would be not true (0), somewhat or sometimes true (1), or very true or often true (2). A weighted sum of responses is obtained, with results loaded on seven clusters: Emotionally Reactive (I), Anxious/Depressed (II), Somatic Complaints (III), Withdrawn (IV), Sleep Problems (V), Attention Problems (VI), and Aggressive Behavior (VII). The sum of scores on clusters I through IV serves as a general "internalizing index," and the sum on clusters VI and VII serves as a general "externalizing index." Raw scores were used in statistical analyses. Clinical significance on this measure is suspected when a raw score exceeds 18 for internalizing behaviors and 24 for externalizing behaviors.

#### **Correlational Analyses**

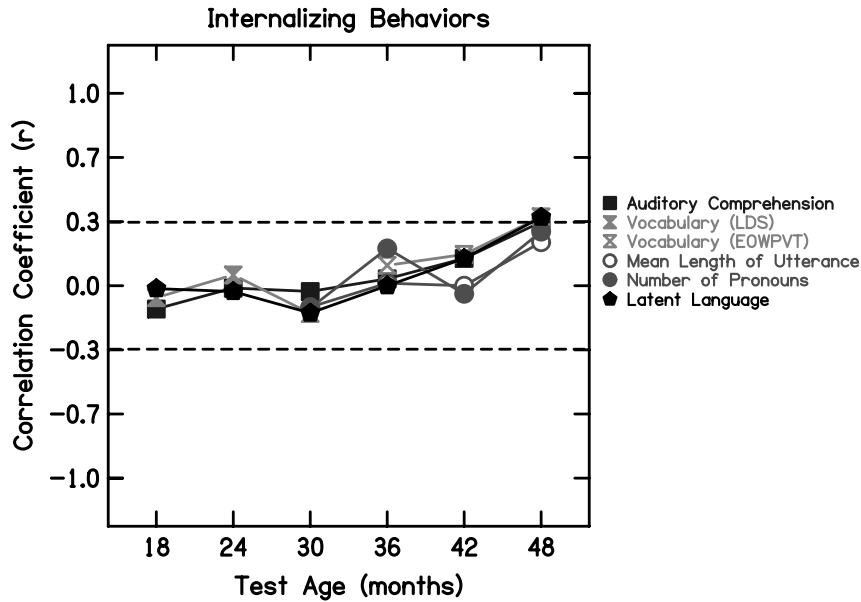
To examine the relationship of behaviors and language development, several series of correlation analyses were performed. In each analysis, Pearson product-moment (i.e., zero-order) correlation coefficients were computed between each behavioral variable (internalizing index and externalizing index) and each language measure (auditory comprehension, vocabulary, unstructured language measures, and latent language measure).

### **RESULTS**

The reported analyses examine the language and behavior measures of a group of pediatric CI users. For an in-depth analysis of the language outcomes of these patients as compared with children with normal hearing or hearing aids, the reader is encouraged to review the results of the ongoing longitudinal study (7). In brief, no significant differences were found between the internalizing or externalizing behavior index among the groups for CI users, hearing aid users, or children with normal hearing. On the other hand, CI users on the whole performed approximately one standard deviation below the mean for normal-hearing children on all language measures, including the latent language measure. For a sense of the range of scores for the CI users, mean scores (and standard deviations) at 48 months were the following: internalizing behavior index, 6.2 (SD, 5.5); externalizing behavior index, 9.3 (SD, 7.4); and latent language measure, 7.5 (SD, 1.9).

#### **Correlating Behaviors With Language**

The first analysis was performed to examine how well internalizing and externalizing behaviors correlated with language development at that same age. In other words, would the presence of internalizing and externalizing behaviors serve as a red flag that language was not developing appropriately? Figures 1 and 2 display zero-order correlation coefficients between each behavior index, internalizing or externalizing, respectively, and the language measures at each age. By taking the square of the correlation coefficients, it is possible to index the amount of variance in language development that can be explained by each behavioral index. The dotted lines show the points above and below which more than 10% of the language measure is explained by the behavioral

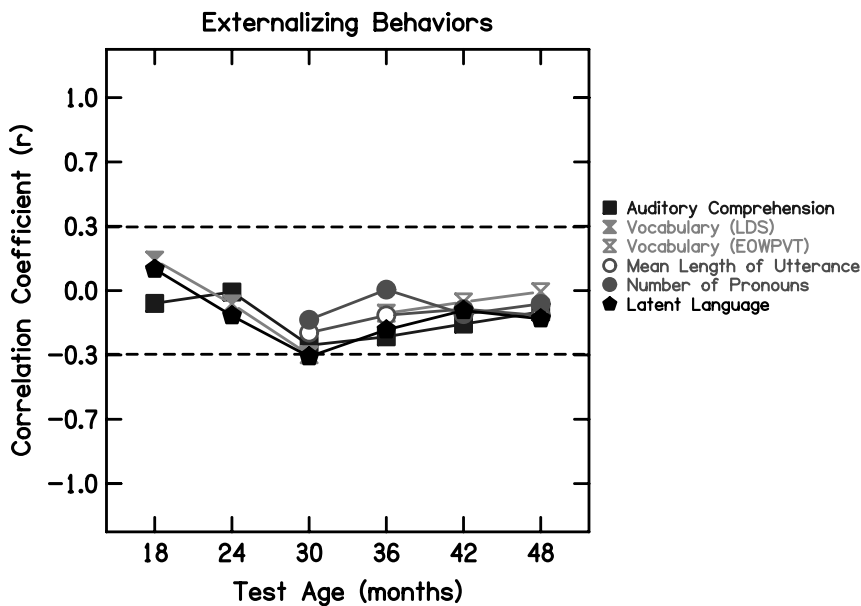


**FIG. 1.** Zero-order correlation coefficients between internalizing behavior index and language measures at each age. The dotted lines show the points above and below which more than 10% of the variance in the language measure is explained by the behavioral index measure. LDS: Language Development Survey; EOWPVT: Expressive One-Word Picture Vocabulary Test.

index measure, with 10% generally accepted as the amount of variance that is sufficient to be of interest. Below 10%, the behavioral index measure is unlikely to be worthwhile in explaining variance in language development. Examination of these coefficients reveals that neither internalizing nor externalizing behaviors consistently explained greater than 10% of the variance in the language measures, including the latent language measure.

**Behaviors as Predictors of Later Language Development**

The second analysis was performed to examine how well internalizing and externalizing behaviors at 36 months could predict language development at 48 months. This analysis examined whether the earlier presence of internalizing and externalizing behaviors might suggest an impending problem with language development, which



**FIG. 2.** Zero-order correlation coefficients between externalizing behavior index and language measures at each age. The dotted lines show the points above and below which more than 10% of the variance in the language measure is explained by the behavioral index measure. LDS: Language Development Survey; EOWPVT: Expressive One-Word Picture Vocabulary Test.



would become evident at a later age. The older ages were chosen because they would best represent ages of more complex language and behavior. Mean length of utterance (MLU) was chosen as representative of unstructured language for this analysis because it is the most commonly evaluated measure of syntactic development. Figure 3 shows zero-order correlation coefficients calculated between each behavior index (internalizing or externalizing) at age 36 months and the variable of the latent language measure at age 48 months. No significant correlations were found (internalizing index  $r = 0.040$ ,  $p = 0.83$ ; externalizing index  $r = -0.132$ ,  $p = 0.48$ ). Similar correlation coefficients were calculated between each behavior index at 36 months and each separate language measure (auditory comprehension, expressive vocabulary, and mean length of utterance) at 48 months, and no correlations were significant.

#### Examining the Poorest Language Performers

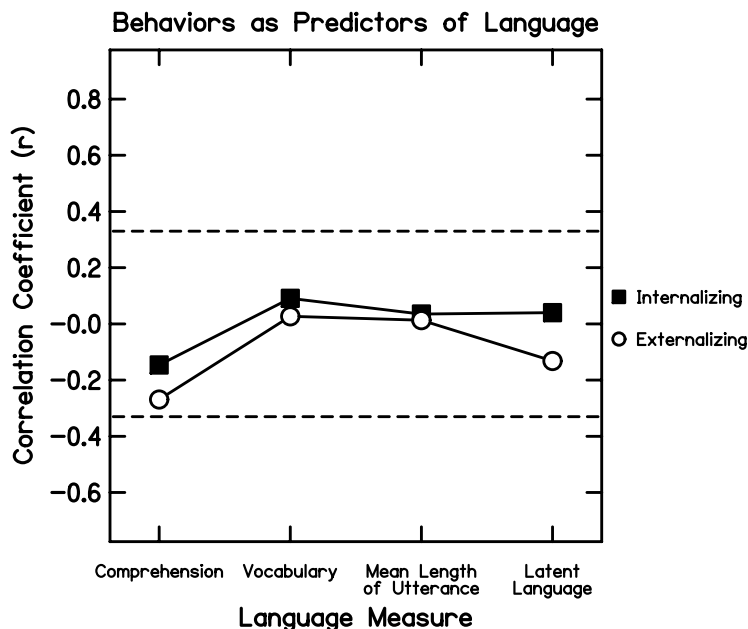
The above findings suggested there was no significant relationship between the presence of internalizing or externalizing behaviors and poor language skills in the group of children with CIs as a whole. However, it was possible that the individual children with the poorest language skills would still show a larger number of these behaviors. Therefore, the 10 children with the poorest latent language measure value at 48 months (all worse than one standard deviation below the mean for the group) were examined independently. As seen in Figure 4, wide variability in internalizing and externalizing behaviors was

seen for these children with the poorest language skills. These findings suggest that even for the children with the poorest language skills, behavior scores varied greatly. In addition, none of these children had behavior indices reaching clinical significance for either internalizing or externalizing behaviors.

#### Examining Children With Slowed Language Development

In addition to failure to progress appropriately in language development, device soft failure has been defined as deterioration of previous performance. Therefore, the developmental trajectory of each child was examined to identify children who showed deterioration in performance over time and to determine whether they showed an increase in internalizing or externalizing behaviors around the time of language deterioration. Individual latent language measure data were examined across ages for each child. No child showed a decline in latent language measure over time.

Next, individuals were identified who showed a slowed rate of growth in latent language measure score. For the group as a whole, the average increase in latent language measure score over each 6-month period was approximately 1.0. A "slowed" language growth rate was defined as an increase in latent language measure score of less than 0.5 over at least one 6-month period. Eight children met this criterion. Among these children, no consistent increase in internalizing or externalizing behaviors was seen around the period of their slowed language growth.



**FIG. 3.** Zero-order correlation coefficients between internalizing and externalizing behavior indices at age 36 months and language measures at age 48 months. The *dotted lines* show the points above and below which more than 10% of the variance in the language measure is explained by the behavioral index measure. Comprehension: Auditory Comprehension; Vocabulary: Expressive One-Word Picture Vocabulary Test score.





